

DM-51SW180 DC WORM GEAR MOTOR

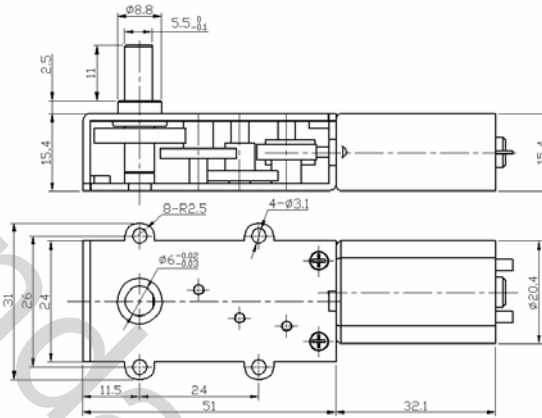
Main Voltage : 6VDC、12VDC、24VDC

Typical Applications :

Optical instrument, Surveillance cameras, Automated energy efficiency, Water saving equipment, IC water card, Toys and gifts, Office equipment, Household appliance, automation equipment



APPEARANCE SIZE



Gearbox Data:

Number of stages	4
Reduction ratio	734
Gearbox length "L"mm	15.4
Breaking torque(kgf.cm)	25
Gearbox efficiency	45%

Driving Motor Data:

Motor model	Rated Volt.	No load		Load				Stall	
		Current	Speed	Current	Speed	Torque	Output power	Torque	Current
		V	mA	r/min	mA	r/min	g.cm	W	g.cm
DM-180-006-6000	6	≤65	6000	≤260	5100	15	0.8	≥55	≥1150
DM-180-012-6000	12	≤27	6000	≤150	5100	15	0.8	≥55	≥430
DM-180-012-9000	12	≤80	9000	≤260	7000	20	1.4	≥80	≥1000
DM-180-024-9000	24	≤50	9000	≤150	7800	20	1.6	≥80	≥550

Remark:

Gear Motor Torque=Driving motor torque*Reduction ratio*Gearbox efficiency;
 Gear Motor Speed=Driving motor speed/Reduction ratio Motor detailed config can be customized according to customer's requests, like voltage,speed,as well as shaft length and shape...

OEM/ODM

Welcome OEM or ODM projects

Geared Motor Samples Data :

Motor model	Rated Volt.	/No load		/Load				/Stall	
		Current	Speed	Current	Speed	Torque	Output power	Torque	Current
	V	A	r/min	A	r/min	kgf.cm	W	kgf.cm	A
DM-51SW1800056800-734K	5.0	0.22	9.2	0.58	6.7	2.9	0.20	10.4	1.57
DM-51SW180-734K	12	0.25	10.5	1	8	5.0	12	22.7	2.95

Curve Chart :

Model: DM-51SW1800056800-734K

Model: DM-51SW180-734K

